

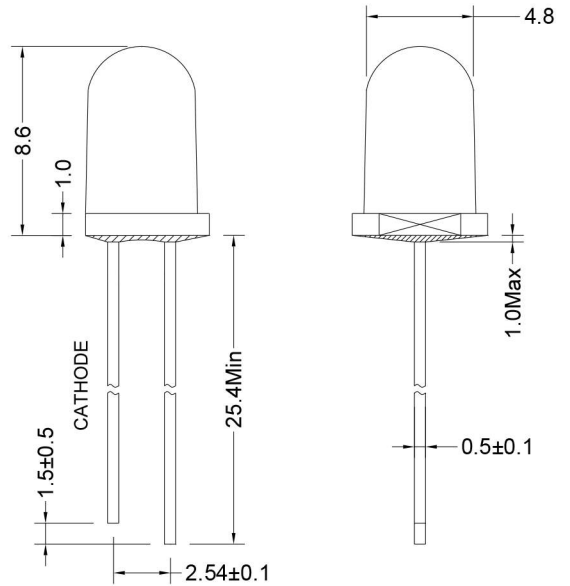
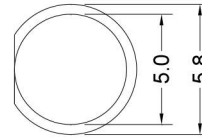
Part No. /: SOL-5030URC

➤ **Features:**

- Single color
- High bright output
- Low power consumption
- High reliability and long life

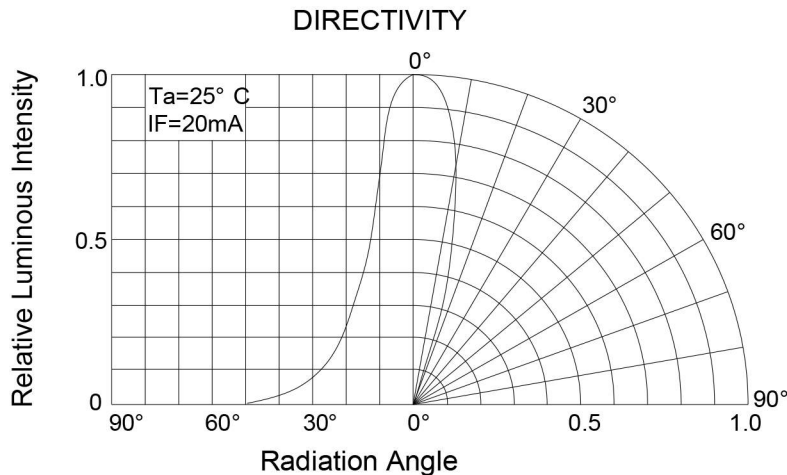
➤ **Descriptions:**

- Dice material: AlGaInP
- Emitting Color:
Super Bright Red
- Device Outline:
φ 5mm Round Type/ 5mm
- Lens Type:
Water Clear



1. All dimensions are millimeters : mm.
2. Tolerance is +/-0.20mm unless otherwise noted

➤ **Directivity:**



Part No. /: SOL-5030URC
➤ Absolute maximum ratings (Ta = 25°C)

Parameter	Symbol	Test Condition	Values		Unit
			Min.	Max.	
Reverse Voltage	V _R	I _R = 30 μ A	5	--	V
Forward Current	I _F	----	----	30	mA
Power Dissipation	P _d	----	----	75	mW
Pulse Current	I _{peak}	Duty=0.1mS, 1kHz	----	100	mA
Operating Temperature	T _{opr}	----	-40	+85	°C
Storage Temperature	T _{str}	----	-40	+100	°C

➤ Electrical and optical characteristics (Ta = 25°C)

Parameter	Symbol	Test Condition	Values			Unit
			Min.	Typ.	Max.	
Forward Voltage	V _F	I _F =20mA	----	2.1	2.5	V
Reverse Current	I _R	V _R =5V	----	----	30	μ A
Dominate Wavelength	λ _d	I _F =20mA	----	624	----	nm
Peak Wavelength	λ _p	I _F =20mA	----	632	----	nm
Spectral Line half-width	Δ λ	I _F =20mA	----	15	----	nm
Luminous Intensity	I _v	I _F =20mA	----	4700	----	mcd
Viewing Angle	2 θ 1/2	I _F =20mA	----	26	----	deg

Part No. /: SOL-5030URC

➤ **Typical electrical/optical characteristic curves:**

Fig.1 Forward Current Vs. Forward Voltage

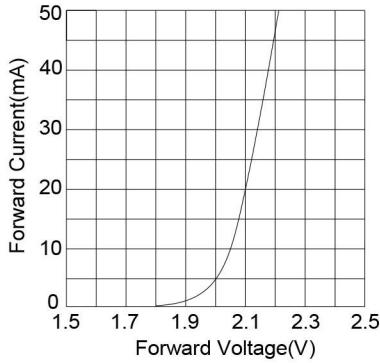


Fig.2 Relative Brightness Vs. Forward Voltage

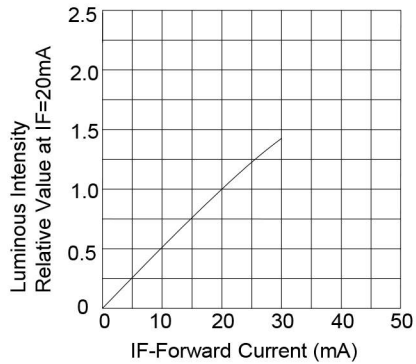


Fig.3 Forward Current Vs. Ambient temperature

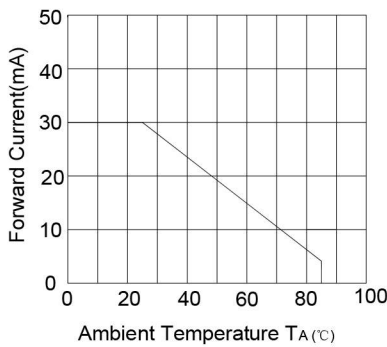


Fig.4 Relative Brightness Vs. Ambient temperature

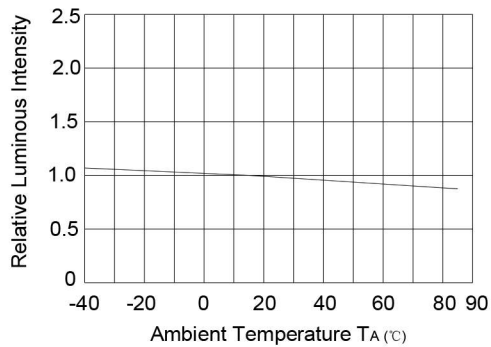
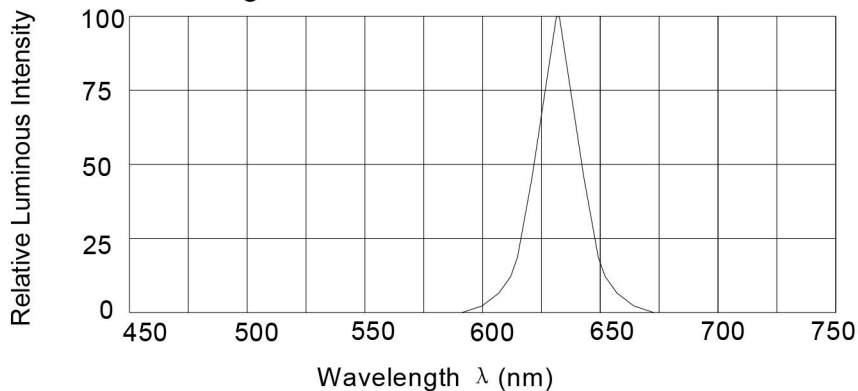


Fig.5 Relative brightness Vs. Wavelength



Part No. /: SOL-5030URC**➤ Label Form Specification**

The diagram shows a rectangular label form with the SOL logo at the top center. Below the logo are five lines of text with blank lines for input: P/N: _____, Rank: _____ / _____ / _____, Qty: _____ pcs QC: _____, Date: _____, and Lot No: _____. At the bottom left is a QR code, and at the bottom right is the website address www.SOL-Lightengine.com.

P/N: Customer's Production Number

QTY: Packing Quantity

Ranks: Iv / Vf / WD

Iv: Iv Rank; Vf: Vf Rank; WD: Color Group

QC: Quality Control chapter

Date: mm / dd / yy

mm: Month; dd: Date; yy: Year;

Lot No: Production batch Number

➤ Lead Forming/

1. Any lead forming or bending must be done before soldering.

2. When forming leads, there must be a minimum of 2mm clearance between the base of the LED lens and the lead bend.

Part No. /: SOL-5030URC

3. Avoid bending the leads at the same point more than once.

4. During assembly onto PCB, the lead pitch of the LED must match the pitch of the mounting holes on the PCB during component placement.

➤ **Soldering Condition**

Careful attention should be paid during soldering. When soldering, leave more than 2mm from solder joint to case, and soldering beyond the base of the tie bar is recommended.

Avoiding applying any stress to the lead frame while the LEDs are at high temperature particularly when soldering.

Recommended soldering conditions:

Hand Soldering		DIP Soldering	
Temp.at tip of iron	300°C Max.(30WMax.)	Preheat temp.	100°C Max. (60 sec Max.)
Soldering time	3 sec Max.	Bath temp.	260°C Max
Distance	2mm Min.(From solder joint to case)	Bath time.	3 sec Max.
		Distance	2mm Min

Part No. /: SOL-5030URC

➤ **Cleaning**

1. Do not clean LEDs with water, Alcohol are recommended solvents for cleaning. When using other solvents, it should be confirmed beforehand whether the solvents will dissolve the resin or not.
2. LEDs may be damaged by ultrasonic-washed. Before cleaning, a pre-test should be done to confirm whether any damage to the LEDs will occur.

➤ **Storage**

1. Environmental temperature: -40°C---100°C, Recommended: -20°C---50°C
2. Environmental humidity: 30%---70%, Recommended: 40%---60%

➤ **Static Electricity**

- 1. Static Electricity or power surge will damage the LED.

It is recommended that a wrist band or an anti-electrostatic glove be used when handling the LEDs.

2. All production machinery and test instruments must be electrically grounded.

Part No. /: SOL-5030URC

3. Maintain a humidity level of 50% or higher in production areas.
4. Use anti-static packaging for transport and storage.

➤ **Notes**

1. This datasheet will be update regularly, if there comes out any changes, pls confirmed by the latest datasheet.
2. When using this product, please observe the absolute maximum ratings and the instructions for using outlined in these specification sheets. SUNPU assumes no responsibility for any damage resulting from use of the product which does not comply with the absolute maximum ratings and the instructions included in these specification sheets.